

# Cambio



Furniture for people



## Cambio can **do more**

C+P's Cambio is more than just a locker! Cambio's versatility and multifunctionality allow you to configure your space as you like and create a unique ambiance. But looks aren't everything: In this brochure you will find all the reasons why Cambio can also meet all your expectations when it comes to day to day usage.

One of the unique aspects of the range is the fact that it can be deployed in all sectors and areas of use. That means that every installation is tailor-made. Not only does Cambio fit perfectly to your specific surroundings, but it enhances them as well. Cambio from C+P is the perfect answer for all applications that call for top-of-the-range design and optimal functionality.



**A sense of quality:**  
Ensemble with stainless steel doors, end facing lockers and matching sloping tops.



**Straightforward design:**  
Double-tier locker with steel doors



**Intelligent design:**  
Mirror face plates with lighting and shelves ensure the best use of end faces.





### **Fitness, Wellness, Leisure**

The first thing after checking in: The changing rooms. Pleasing and versatile fixtures become the visiting card of your facility. C+P's Cambio fulfills these requirements both from the optical and technological points of view: With attractive front materials, functional and intelligent locker configuration, optimal space usage and retrofitting options. So the wellness experience already starts in the changing room.

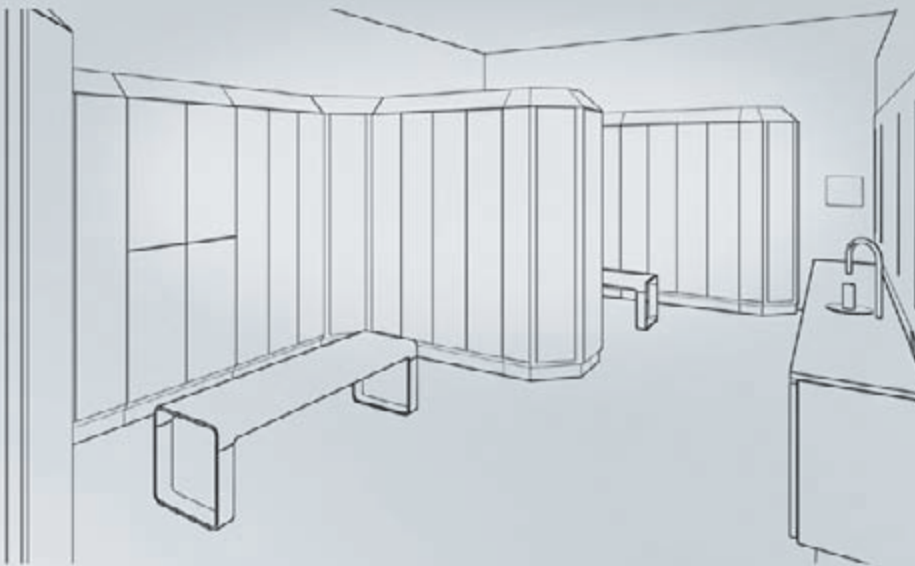
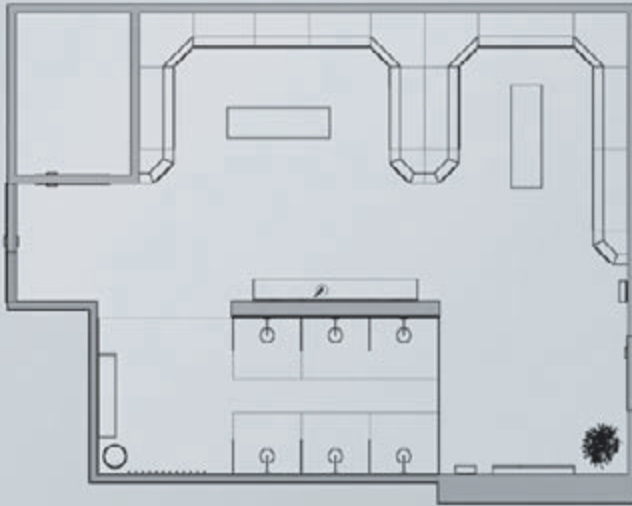
### **Industry, Trade, Commercial**

Changing rooms for industrial or commercial use place special demands on the furniture. Cambio represents the perfect product of a market leader's decades-long experience – e.g. in the form of the optimal ventilation and drying functionality thanks to the SVL concept, or through the practical configuration variants, or with the 'floating configuration' on pillars for extreme ease of cleaning.

### **Hospitals, Clinics, Homes**

In the medical and health-care context, hygiene, cleanliness and safety are the paramount factors. This applies equally to patient lockers, employee lockers or safes for visitors' valuables. Cambio combines the best possible cleaning characteristics with unlimited color variations. That means it can adapt to any interior design concept – with unlimited freedom of choice in the locker configuration. And that means: No-risk investment on account of the easy retrofitting options.





## Cambio **shapes rooms**

It makes a big difference whether furniture is just put into a room – or becomes a harmonious component of the interior design concept. Cambio has all it takes to blend in with and enhance any space.

The decisive factors here are not only the versatility of the possible locker configurations, but also the wide range of materials and surface finishes. The innumerable ways of combining these allow Cambio to create spatial impressions second to none.





**Cambio can integrate:**

All standard mechanical and electronic locking systems, from turning bolt latch technology to online locking systems forming part of a comprehensive building automation system.







**Numbering and orientation:**

For optimal spatial orientation and numbering, we supply color-coded labels and pictograms.

## Perfectly **integrated**

Where creative interior designers make use of a wide range of spatial configuration options, the choice of interior fittings makes the difference when it comes to finding the perfect blend of impressive looks and practical utility.

Cambio systems not only fit in to the desired spatial ambience perfectly, but their thought-through technology and intelligent details ensure that they can be deployed with maximum efficiency and cost effectiveness.







Steel



Stainless steel



Wood decor



Real-wood veneer



HPL with vectogram

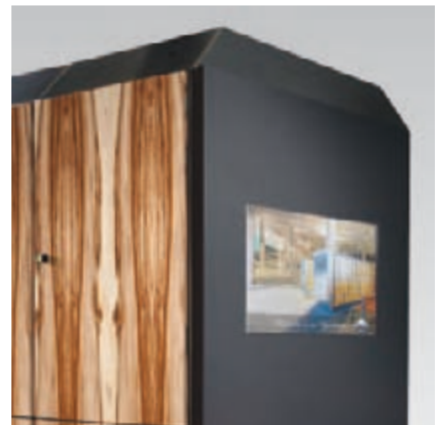
**Creative front design:**

The stable steel system body forms the ideal basis for creative door variants using very varied materials:





**Professional technology:**  
The end face plate can be used as a blackboard with integrated monitor: the perfect solution.



## For a dignified **background**

When it is a matter of selecting fittings for a particularly tasteful ambiance, only something special will do. When 'good' simply isn't good enough, furniture is required that is uncompromisingly high-class.



**Perfect division of space:**  
Shoes, outer garments, briefcase, notebook – a place for everything.



**Safe with PIN code lock:**  
The robust safe is permanently installed and provides full security for all valuables.



**Hairdryer holder:**  
On the front side panel, including the invisible electrical connections.



Whether it's for a business lounge in a high class fitness club or for changing rooms in a refined wellness hotel: The Cambio Business Line represents exclusivity. Excellent workmanship and practical functionality combined with fine materials (e.g. selected real wood veneer doors) and unsurpassed design. An excellent visiting card for all hosts who want to convey to their guests that they are worthy of the finest treatment.

The Business Line provides a wealth of functional highlights and added comfort aspects. Starting with the spacious and easy-access configuration of the locker spaces, on to the professionally integrated technology: Cambio makes everything possible!



**Matching seating:**  
The Vitas series benches provide an enhancement in any high-class context.



**54° profile in the body:**  
This innovative profile makes the locker even more stable and secure. Also, the interior can be cleaned and clothing can be removed more easily.





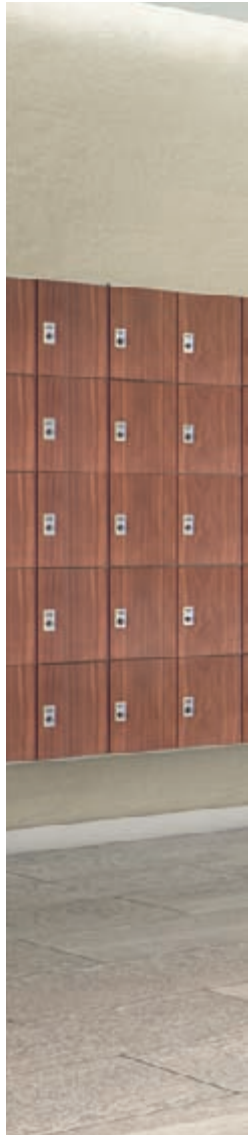


**HPL bench:**  
Attractive bench of shaped HPL material.

## Components in harmony

Discriminating visitors expect not only representative furnishings, but ones that complement each other as part of a thought-through and high quality design concept in which each component contributes to the whole.

This means flexible adaptation from one room to another and fulfillment of individual customer requirements. Solutions like this are not available 'off-the-peg' – and yet it must be possible to manufacture them using industrial production methods. There is a simple answer to this: Cambio from C+P.



**Comfort bench system:**  
C+P's flexible 'Comfort bench' has inside and outside corners and can be adapted to any space.



**Comfortable sitting:**  
Robust hardwood bench slats with rounded cross-sections.



**Intelligent shoe rack:**  
Set back to prevent it being trodden on accidentally.



**Comfort coat hooks:**  
With rounded mountings and replaceable individual labels.





The previous double page and the image above show fitness club furnishings. Fine walnut decor doors in pure white steel bodies, benches installed below with matching HPL seating and integrated assembled box lockers speak for themselves.







**Elegance in every detail:**

The pillar panels that match the lockers also contain the waste bins. Front side panels with wood applications, stainless steel mirrors and numbering complete the picture.



# Ventilation and drying **as a system**

All the lockers available on the market have holes and slits. And somehow that means the interiors are ventilated – so they say, anyway. But does that really work?

The effectiveness of the ventilation in C+P lockers has been scientifically investigated and confirmed. Thanks to the air flow that is determined by the constructional design, damp clothing dries significantly quicker – guaranteed and without extra energy input!

For drying requirements that go beyond this, the FVL and FVLD concepts can be implemented.

Solutions are also available for hygiene requirements that go even further (e.g. with integrated filter and disinfection systems). We look forward to your specific inquiries. Before you take a decision regarding a ventilation system, please consult us for the most economical solution.



**Fresh air for clothing:**  
Forced ventilation (FVL) via an on-site ventilation system (additional equipment).





**SVL concept:**

Perforations that are located with the ventilation requirements in mind ensure the optimal flow of air.



**FVL/FVLD concept:**

Poppet valves regulate the correct quantity of air per compartment.



**The dryer of the FVLD concept:**

The electric dryer is located in a locker section where it cannot be seen. It dries even wet clothing in just a few hours.



**SVL concept**

**Self Ventilation concept (SVL)** = effective drying without additional ventilation equipment.

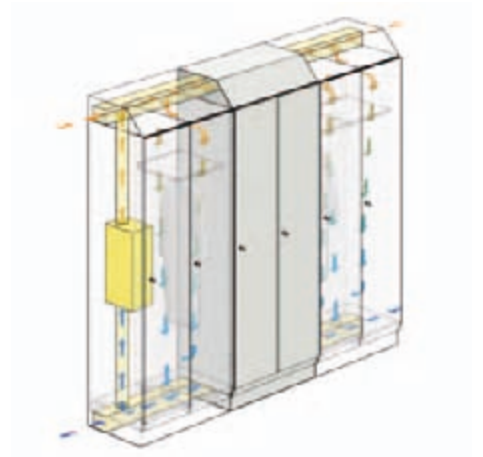
Can be used for 90% of all drying tasks!  
Depending on the amount of moisture, drying is complete in 6-14 h. The room temperature should be approx. 20° C with a relative humidity of approx. 50%.



**FVL concept**

**Forced Ventilation concept (FVL)** = odor removal by means of high air renewal rate and improved drying – implemented with the aid of an on-site ventilation plant.

Can be used where emissions are to be removed and the drying requirements are normal, for instance. Depending on the amount of moisture, clothes dry in 6-14 h. The room temperature should be approx. 20° C with a relative humidity of approx. 50%.



**FVLD concept**

**Forced Ventilation concept with Drying (FVLD)** = effective air renewal by means of an electric dryer and additional ventilation equipment.

Can be used where very large quantities of moist clothing must be dried in a short time. Depending on the amount of moisture, clothes dry in a few hours.

# Thoroughly **thought through**

What really makes the difference are the details!  
 Cambio has much more to offer than you may think.  
 Ingenious and thought-through details – typical C+P.



**54° profile in the body:**  
 This innovative profile makes the locker even more stable and secure. Also, the interior can be cleaned and clothing can be removed more easily.



**Double coat hook:**  
 Oval special wardrobe rail with anti-rotation, sliding double hook for very easy use. With system holder for hangers.

## Spatial orientation and labeling



**Door numbering:**  
 As film; digit combinations with three characters each. In white aluminum or anthracite.



**Row numbering and pictograms:**  
 As film; digit combinations with seven characters each and also as complete pictogram including text. In white aluminum or anthracite.

## Height adjustment for feet and base



**Easy height adjustment:**  
 Cambio's corrosion-free plastic feet can be height adjusted from the inside and from the outside.

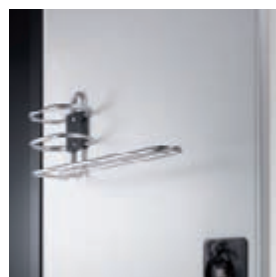


**Base can be height adjusted from inside:**  
 For easier adjustment of individual lockers and locker rows.

## Equipment solution examples



**Mirror:**  
 Mirror available in two sizes (90 x 100 or 200 x 300 mm).



**Towel / shower gel holder:**  
 Made of chromed metal for the inside of the door, available for steel and decor doors.



**Flip-flop / shoe holder:**  
 Made of chromed metal for the inside of the door, available for steel and decor doors.



**Additional shoe shelf:**  
 installation height approx. 250 mm. Can easily be retrofitted by a non-specialist!

## Mechanical locking systems



### Cylinder lock:

As platelet cylinder, pin cylinder or dimple lock. With master key function and number label if required.



### Safety turning bolt:

It is not possible to destroy the locking mechanism by turning it too far as the locking cylinder only engages after the padlock has been removed.



### SAFE-O-MAT lock:

As deposit or token-operated lock with practical twin coin function and as ticket-operated lock.

## Electronic offline locking systems



### PIN code lock:

The simple solution with freely selectable PIN code. Ideal wherever no keys or data carriers are to be used.



### GAT-Lock 6010:

Electronic locking system with button function and various options for data carrier integration.



### SAFE-O-TRONIC® lock:

Variable locking system with different operating options – from PIN code to transponder to NFC technology.

## Electronic online locking systems



### GAT-Lock 5010 with central information terminal:

While the compartment can be opened directly at the locker, the central display serves to provide information about the lockers that are occupied and that are free.



### METRA locking system with central control unit:

The compartment is opened from the central control unit – either using a data carrier or a PIN code.



## An ingenious **combination**

C+P supplies a large range of coatings and surfacing options as standard. We shall also be glad to supply custom color and surfacing solutions. You will find the full range and additional information on color options in the current catalog. Have fun choosing!



### **Body colors:**

As well as the classic body colors white aluminum and anthracite, Cambio offers a large selection of other possibilities.







**Door colors /**

**Accentuation colors:**

Strong or muted tones are especially suitable for doors or for accentuation.



**HPL decor fronts:**

Modern decor options are available for the HPL fronts and face plates.



**Real-wood veneers:**

The perfect choice for representative areas. A wide range of current veneers to choose from.

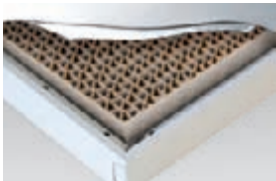
**Steel doors**



Single-wall doors with closed side profiles for greatest stability and anti-theft security.



Double-wall doors with insulation; sandwich construction with good sound absorption.



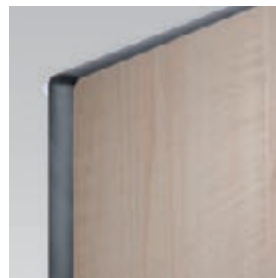
**New door opening limiter 90°:**

Made from special heavy-duty, plastic-coated stainless steel cable. Standard design for all steel and decor doors.



Door hinge of aluminum die-cast/plastic for steel doors.

**HPL doors**



HPL door with attractive wood decor.

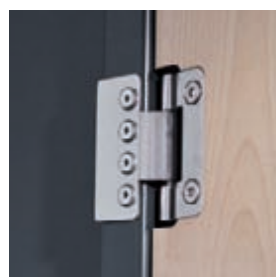


HPL = high pressure laminate (high-density solid core compact panel with decor).



**New door opening limiter 90°:**

Made from special heavy-duty, plastic-coated stainless steel cable. Standard design for all steel and decor doors.



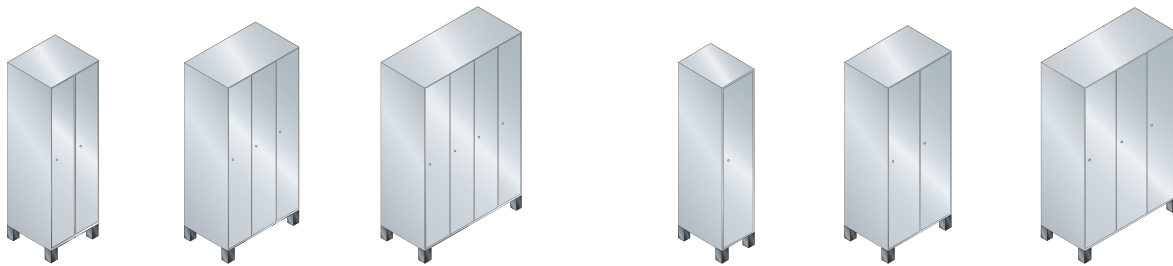
Door hinge of stainless steel for decor doors.

# The choice **is yours.**

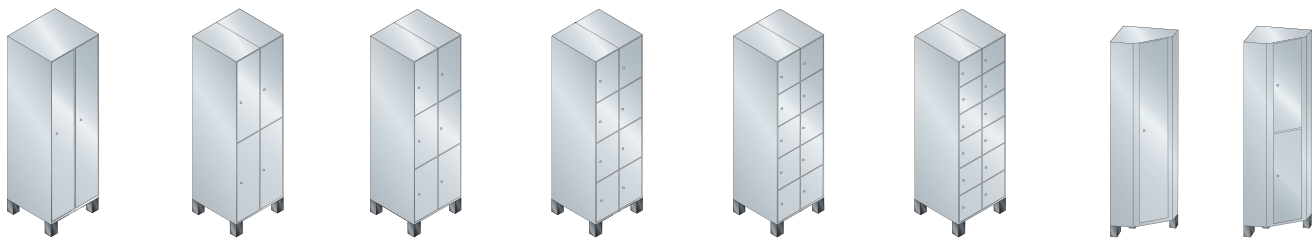
You will find the right solution for any application in the Cambio range. Because we place great value in variability. And we are certain that we have just the right solutions for you too!

Your C+P advisor will be glad to provide you with more information and show you the optimum solution for your installation.

## The Cambio series from C+P is available...



...in **compartment widths** of 300 or 400 mm, with one, two, three or four compartments (compartment width 400 mm up to three compartments).



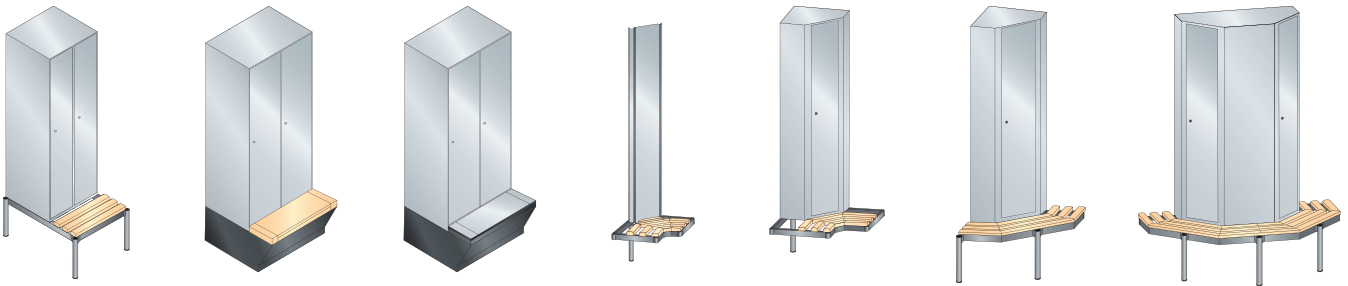
...in **different variants** with continuous doors and two, three, four, five or six compartments one on top of the other or as corner locker



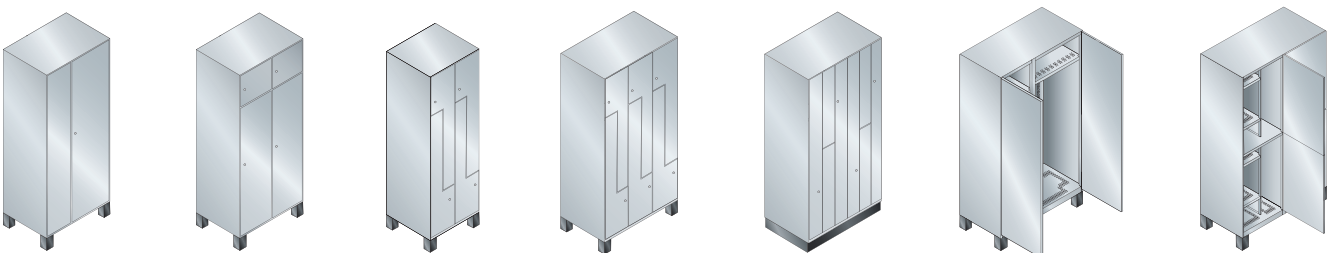
...with **various front and door options** e.g. in steel or stainless steel, in wood decor or real-wood veneer, or even with a customized machined vectogram.



...to be set up in different ways on feet, with base planking panel, pillar feet or mounted on the wall.



... with substructures and corner solutions with bench underneath, with storage box, with corner panel for inside corners, as corner locker for inside or outside corners and double locker for outside corners.



...for special solutions e.g. with doors that close towards each other, with safe, as Z-shaped locker and Z-shaped combination locker or other special applications.

Incidentally:

C+P is the specialist for tasteful and efficient furnishings and fittings made of steel. We have been specializing in the field for decades. So it is no wonder that our customers have enabled C+P to become the market leader in numerous product segments.

You can obtain more information about the Cambio range and the address of a specialist dealer near you by calling

**+49 (0) 64 65 / 919 - 340**

or sending an email to **sales@cp.de**

**C+P Möbelsysteme GmbH & Co. KG**

Boxbachstraße 1 · D-35236 Breidenbach/Germany

Tel. +49 (0) 64 65 / 919 - 340 · Fax +49 (0) 64 65 / 919 - 349

E-Mail sales@cp.de

Internet www.cp.de

*Furniture for people*

